



MOUNT RUSHMORE NATIONAL MEMORIAL

JULIA ARDUVANOVA
10A

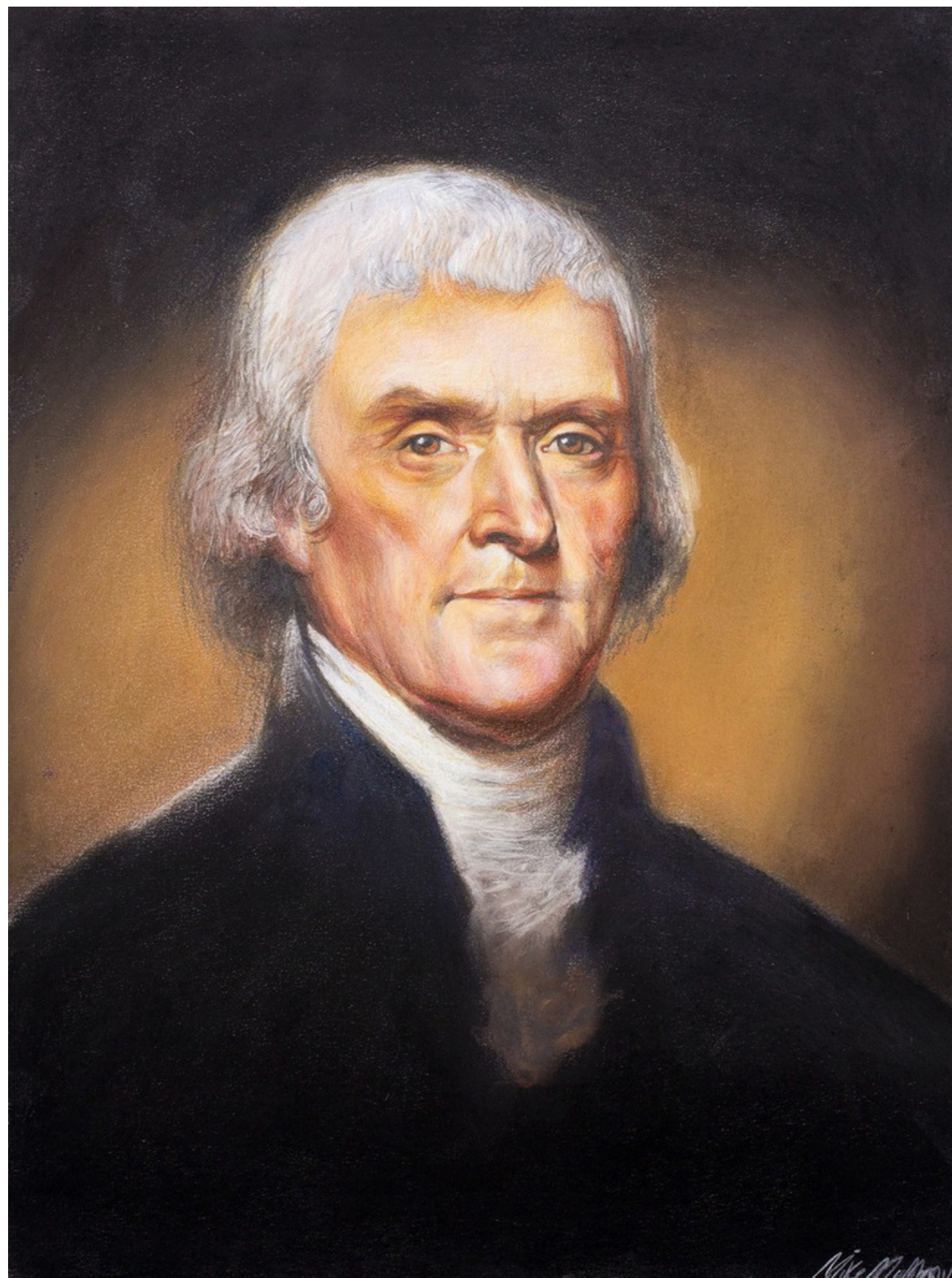
Mount Rushmore stands as a shrine of democracy, a monument and memorial to this country's birth, growth and ideals. Mount Rushmore symbolizes the greatness of this nation through the greatness of its leaders. The epic sculpture of Mount Rushmore depicts the faces of four exalted American presidents that symbolize this nation's rich history, rugged determination and lasting achievements. The faces of four American presidents-George Washington, Thomas Jefferson, Abraham Lincoln, and Theodore Roosevelt-are carved into the mountain.



Washington was selected for Mount Thomas Jefferson Rushmore because he was the father of the country and represents Americans' struggle for independence, their constitution and their liberty.



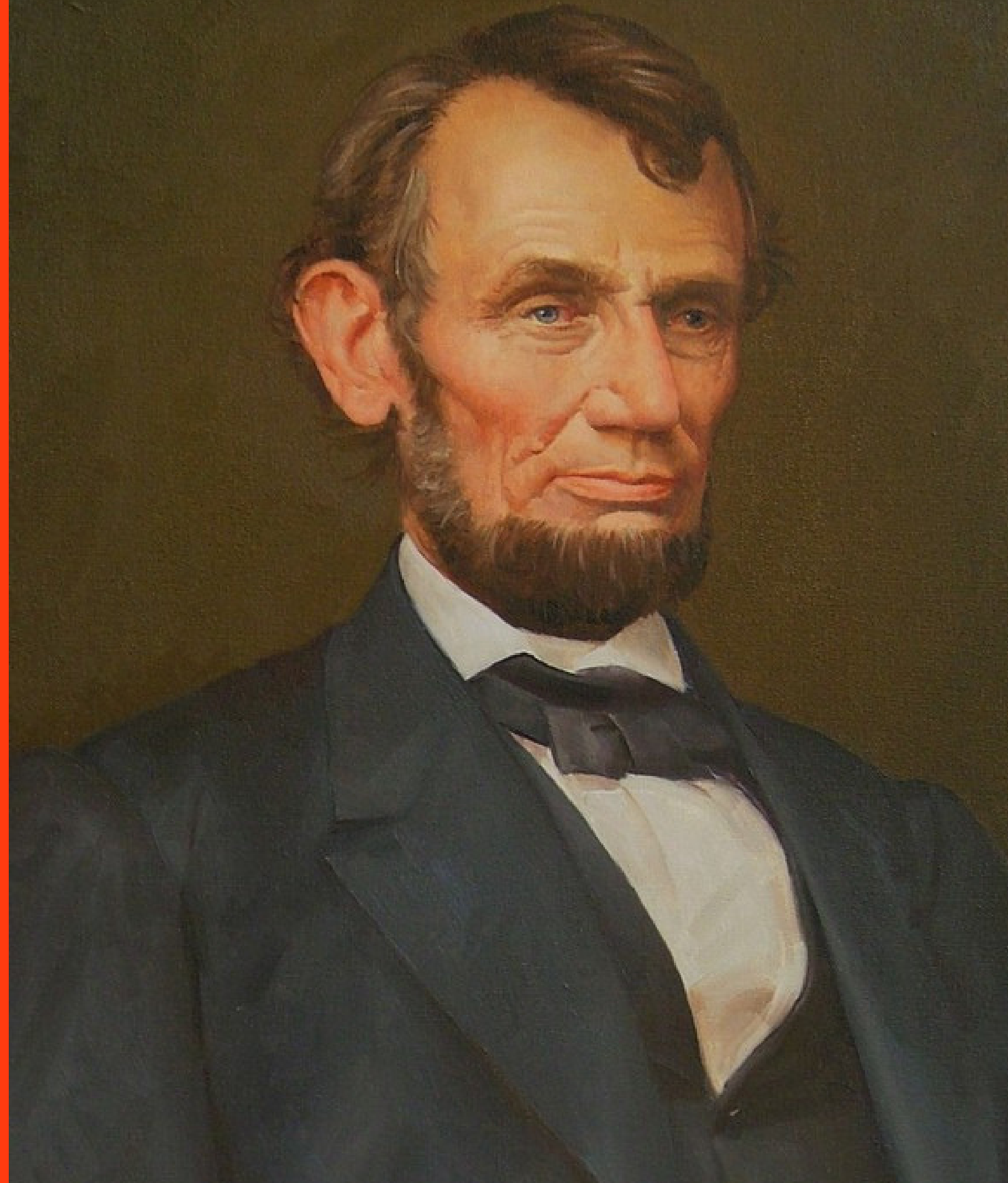
Jefferson was to be honored on Mount Rushmore as the author of the Declaration of Independence, representative government and for the expansion of the country through the Louisiana Purchase.





Teddy Roosevelt, the third bust on Mount Rushmore was selected because he saw through the completion of the Panama Canal linking the oceans and opening the connecting waters of the East and the West.

**Lincoln was chosen
for preserving the
Union through one
of America's
darkest hours and
for the ideals of
freedom and
equality for all.**





In the words of Mount Rushmore's creator, John Gutzon Borglum, "Hence, let us place there, carved high, as close to heaven as we can, the works of Theodore Rooseveltour leaders, their faces, to show posterity what manner of men they were. Then breathe a prayer that these records will endure until the wind and the rain alone shall wear them away".

